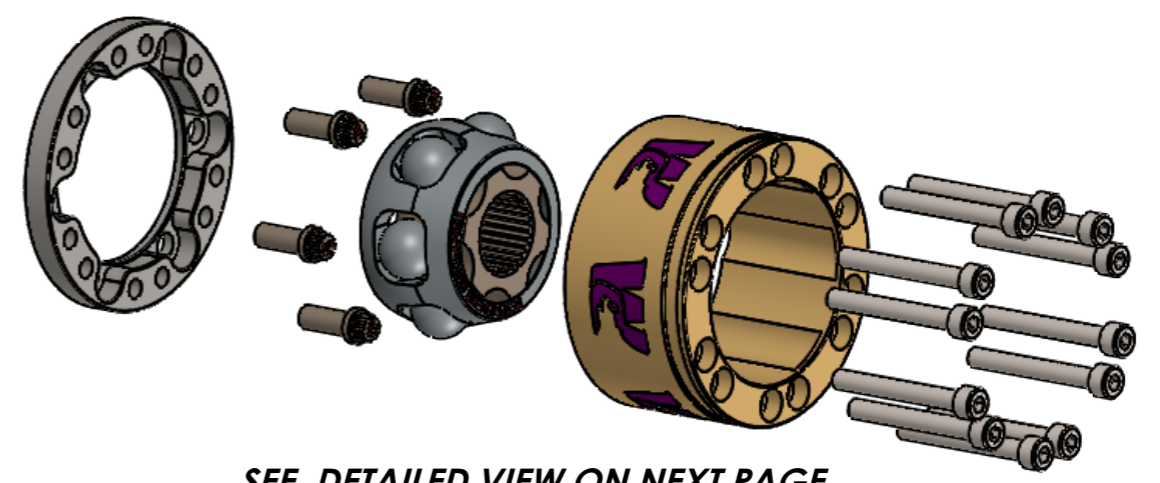
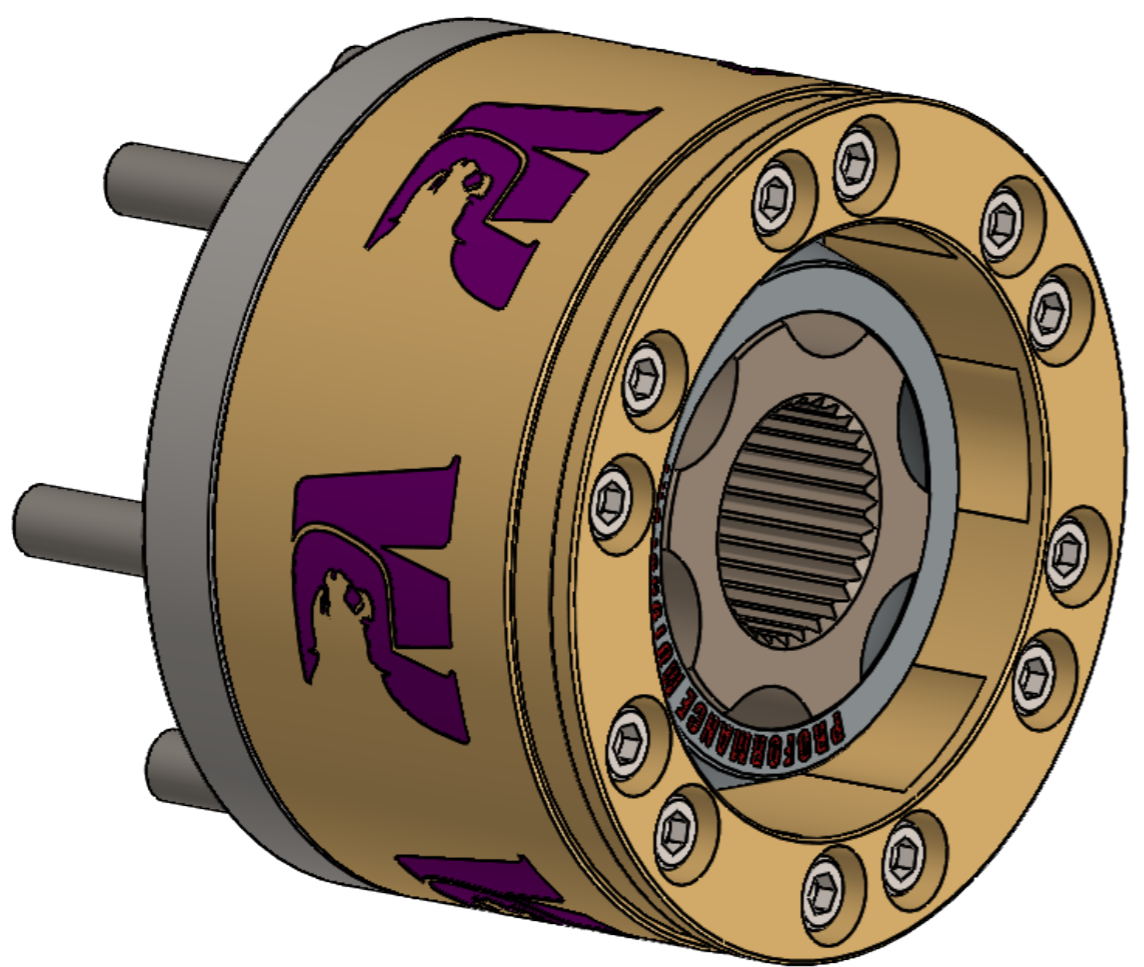
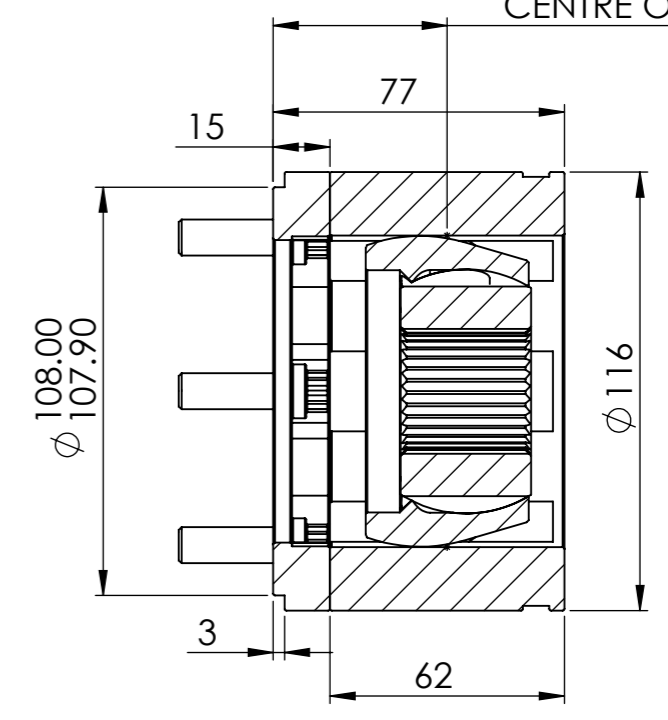
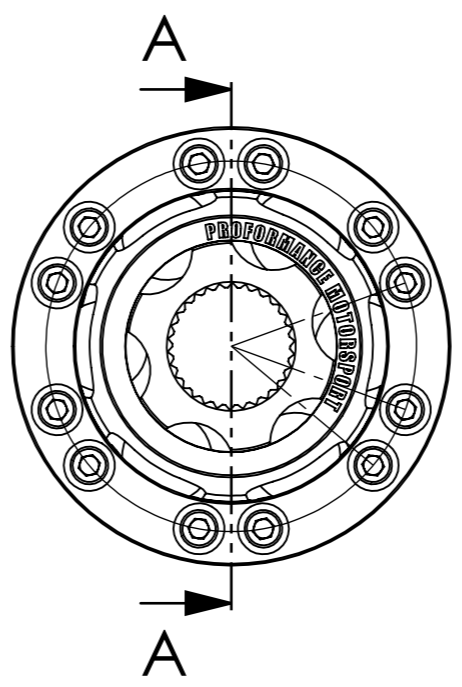
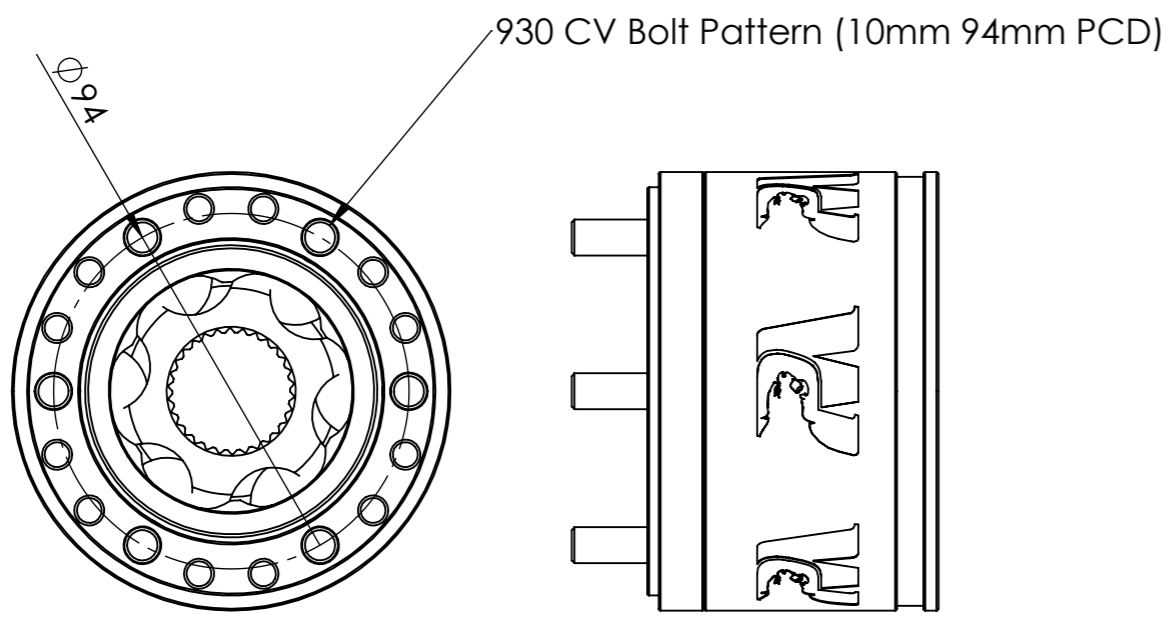


NOTE: THESE CV JOINTS ARE LARGER IN DIAMETER THAN A 930 CV JOINT AND WILL NOT FIT INSIDE FLOATING STYLE HUBS

UNLESS OTHERWISE SPECIFIED: DIMENSIONS ARE IN MILLIMETERS SURFACE FINISH: TOLERANCES: LINEAR: ANGULAR:			Heat Treatment: Finish:	APPLY 0.5 RAD TO ALL TURNED EDGES UNLESS STATED OTHERWISE	PROFORMANCE [®]	
REV	DATE	REASON FOR REVISION			TITLE:	
01						
02						
03						
04						
	DATE	NAME	MATERIAL:		930 EXTREME ANGLE CV JOINT	
DRAWN					A3	
CHK'D						
MFG			WEIGHT: g	SCALE:1:2	SHEET 1 OF 4	

46
CENTRE OF CV JOINT



SEE DETAILED VIEW ON NEXT PAGE

NOTE: THESE CV JOINTS ARE LARGER IN DIAMETER THAN A 930 CV JOINT AND WILL NOT FIT INSIDE FLOATING STYLE HUBS

UNLESS OTHERWISE SPECIFIED: DIMENSIONS ARE IN MILLIMETERS SURFACE FINISH: TOLERANCES: LINEAR: ANGULAR:			Heat Treatment: Finish:	APPLY 0.5 RAD TO ALL TURNED EDGES UNLESS STATED OTHERWISE	PROFORMANCE [®]	
REV	DATE	REASON FOR REVISION	TITLE:			
01						
02						
03						
04						
	DATE	NAME	MATERIAL:	PART NUMBER: 930E CV		
DRAWN				A3		
CHK'D						
MFG			WEIGHT: g	SCALE:1:2	SHEET 2 OF 4	